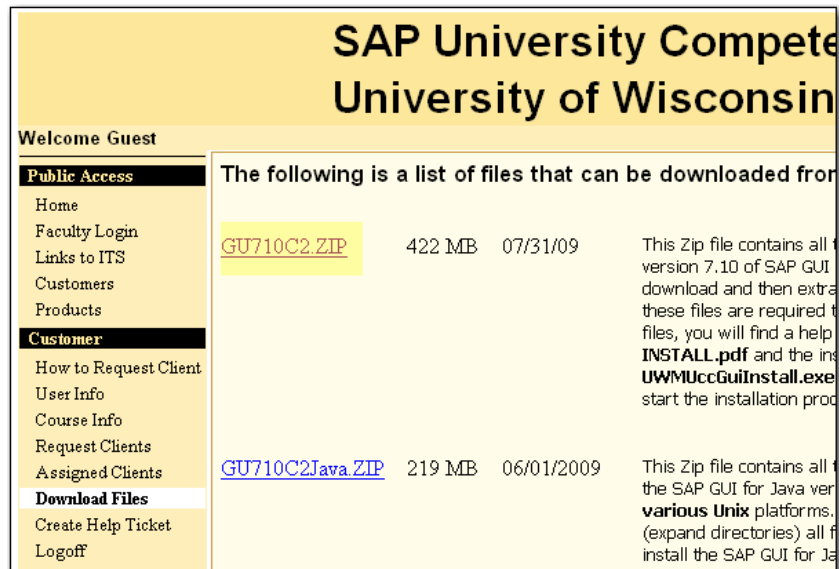
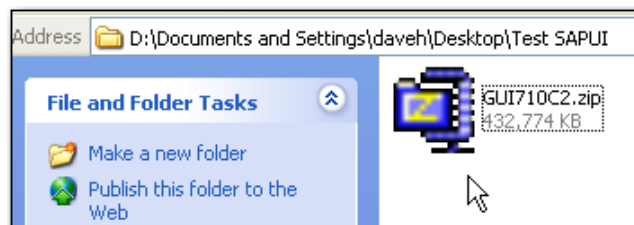


Instructions for Installing SAP GUI 7.10 for Windows

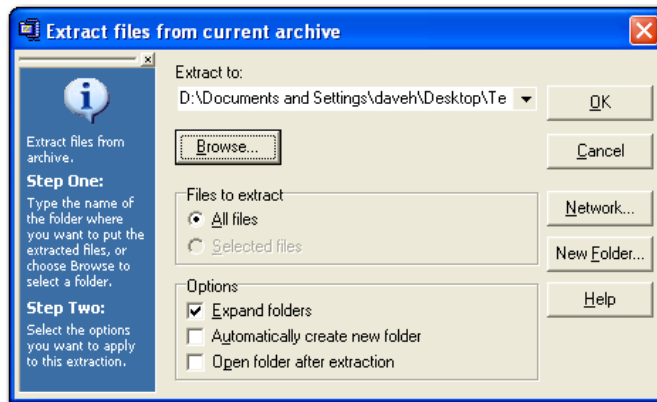
1. Download the **GU710C2.ZIP** file from the Download Files section of the <http://www.ucc.sba.uwm.edu> website:



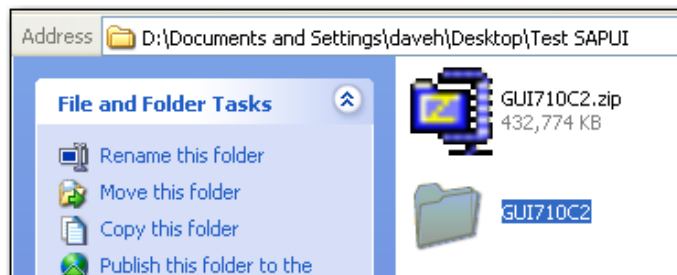
2. Double click on the downloaded file **GUI710C2.zip** to unzip it:



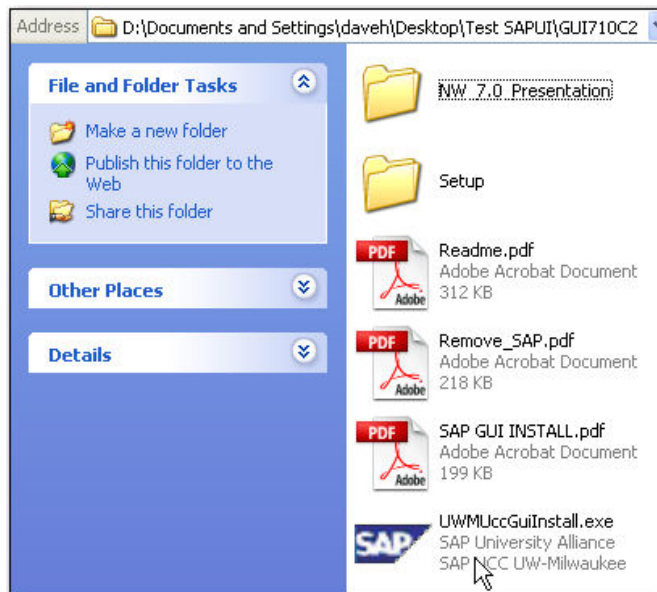
Select the option **Expand Folders**:



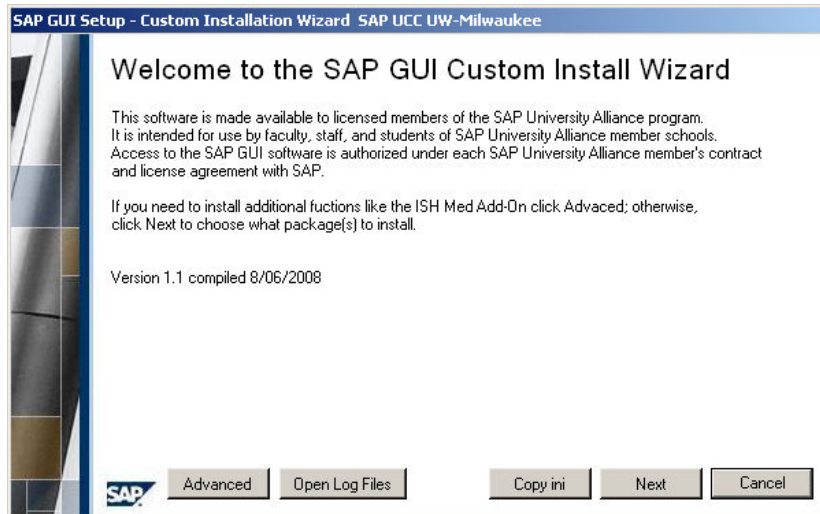
- Open the newly created folder entitled **GUI710C2**:



Double click on **UWMUccGuiInstall.exe**:



The Custom Install Wizard screen appears as follows:

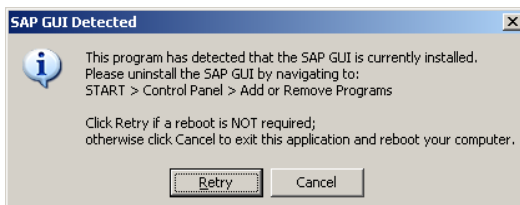


You will have the following options:

- **Advanced** – For those wanting to install additional features other than the ones given via the Custom Install Wizard
- **Open Log Files** –Allows users to open the latest install logs and error logs on the system
- **Copy ini** – Will only copy the saplogon.ini file located in the setup folder to the needed location on the users computer
- **Next** – Processed to the next step of the wizard
- **Cancel** – Stop the wizard from proceeding any further

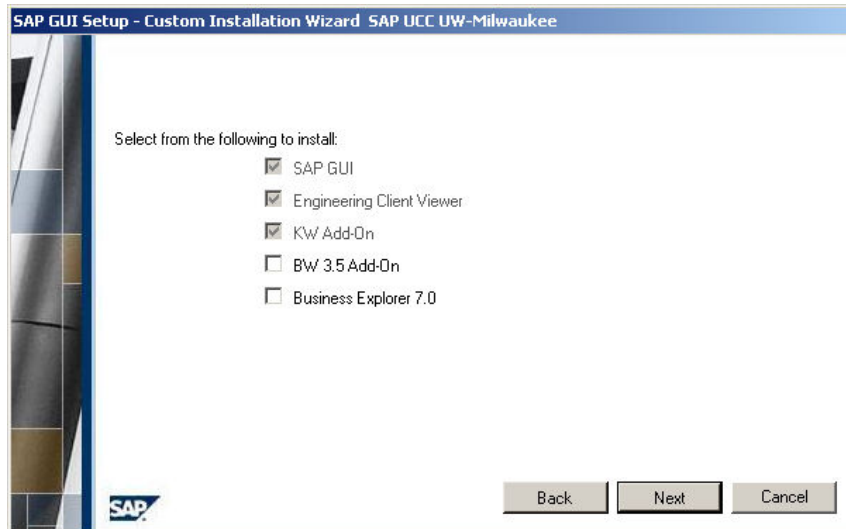
For most installs you will click **Next**.

Note: You will receive the following message if the program detects that the SAP GUI is currently installed on your computer



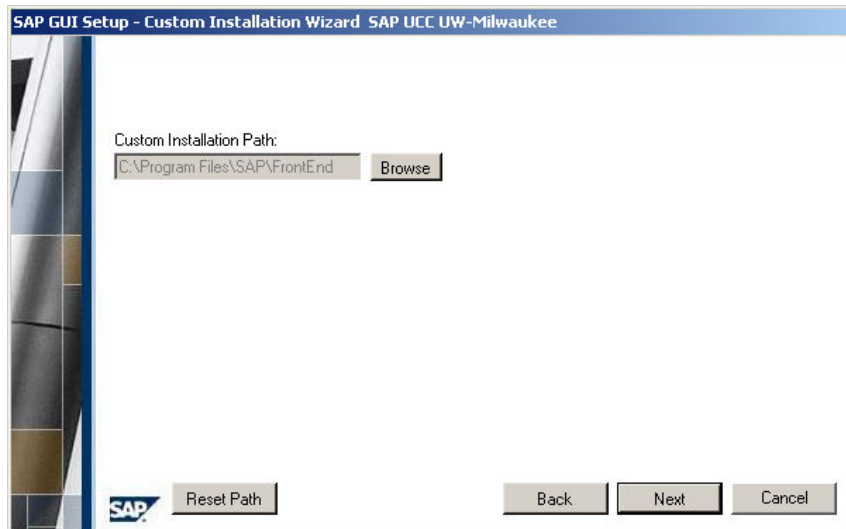
3. Now chose what components you would like to install, and click **Next**. You cannot deselect the following:

- SAP GUI
- Engineering Client Viewer
- KW Add-On



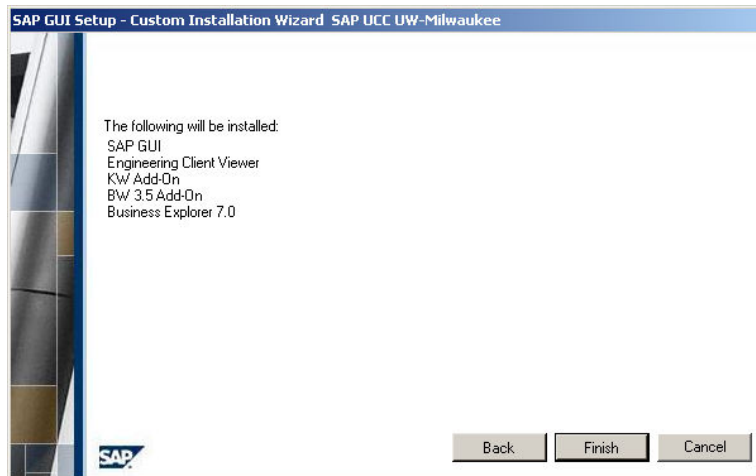
Next you choose the location where you would like to install SAP GUI. If you do not want the SAP GUI to be installed to its default location, click **Browse** to set a new location. If you made a mistake about where you would like to install the SAP GUI, click **Reset Path**.

Once you are finished, click **Next**.

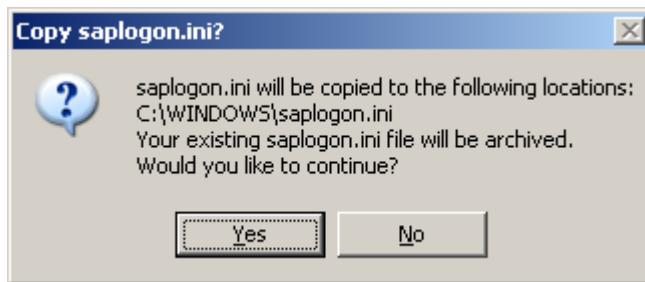


Finally, the wizard will display the programs to be installed. If you are satisfied with your selection, click **Finish** to begin the installation

Note: Installation time will vary depending on the components you have selected and your computer's hardware



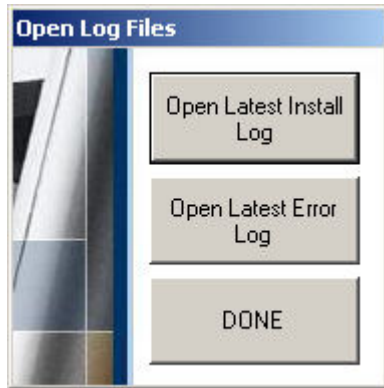
If the wizard detects that you already have a copy of the saplogon.ini file on your computer, it will ask you if you would like to archive your current one and copy the saplogon.ini file located in the setup folder.



If you select Yes, you will be told what the archived name is.

Note: Archive Name Format is saplogon.bak.+ year + month + day. + the number of times the file has been archived today

With the installation complete, you will be given the option to open the latest log files. If you are interested in viewing the install log or any error logs, click on the corresponding buttons. Otherwise click



4. After installing the SAPGUI, you need to reboot your PC.

5. Trouble shooting the Install Wizard:

To help simplify the installation process of the SAP GUI, the Microsoft .Net Framework is used to help gather system information. This information includes: location of program files, the version of windows running, and the detection of Vista's User Account Control. For more information about the .Net Framework please visit:

<http://msdn.microsoft.com/en-us/netframework/default.aspx>

As of the time this document was written, the latest version of the framework was 3.5 SP1; at least version 2.0 is required to run the installer. To download version 3.5 SP1 please visit:

<http://download.microsoft.com/download/2/0/e/20e90413-712f-438c-988e-fdaa79a8ac3d/dotnetfx35.exe>